

LOCK FOCUS

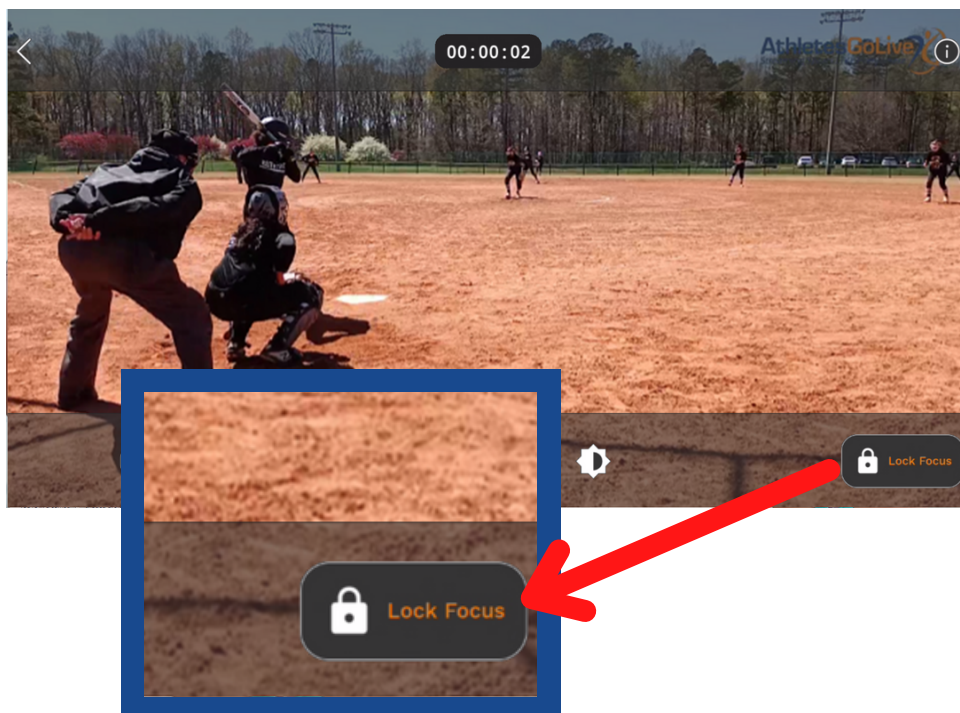
STEP 1

Place your AGLv3 Camera in the location you prefer and let the camera focus onto the field then click the "Auto Focus" button



STEP 2

The "Lock Focus" button will appear and will ensure your focus is sharp on objects both near and far



REMINDER:

The icon will change from "Auto Focus" to "Lock Focus". Each time the user goes to "Start Broadcast", the camera will default to auto-focus.