

# OFFLINE RECORDING

BETA

## WHEN SHOULD I USE OFFLINE RECORDING?

Offline Recording is the perfect solution for when you're at a ballpark in an area with bad signal/cell service. This new feature guarantees that you will have a clear, uninterrupted video of your games anywhere.

## WHAT DO I NEED TO GET STARTED?

You need to be signed in to your AthletesGoLive account and have some level of data connection to schedule your game (limited signal is okay). Please make sure to use your streaming credentials (example: streaming@agl123456.com).

## HOW MANY OPTIONS ARE THERE?

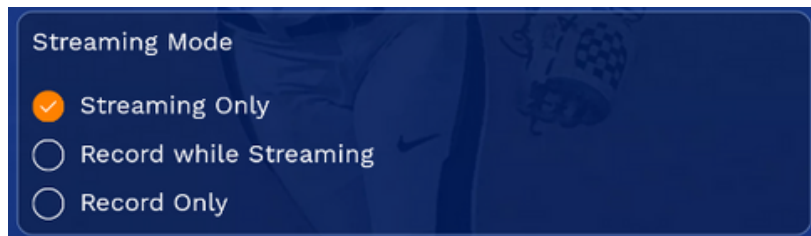
There are 3 different Offline Recording options to choose from:

- 1) Streaming Only
- 2) Record While Streaming
- 3) Recording Only

## OPTION 1: STREAMING ONLY

### STEP 1

Select "Streaming Only"



NOTE: Utilize the Streaming Only feature when you have no signal issues.

### STEP 2

Stream your game as usual and choose "End Game" when complete



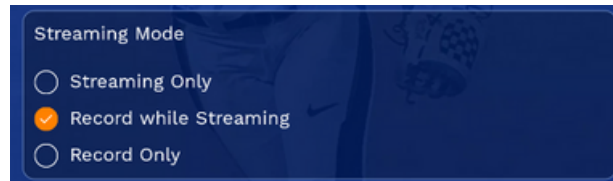
# OFFLINE RECORDING

BETA

## OPTION 2: RECORD WHILE STREAMING

### STEP 1

Select "Record While Streaming"



NOTE: Utilize the Record While Streaming feature when you have questionable network coverage.

### STEP 2

Stream your game as usual and choose "End Game" when complete

- When you end the game, you will have TWO versions of the same game. The first version is available in your archived games. The second version is stored locally on your streaming device.
- If you watch the archived version and the video is clear, then the process is complete.
- If the video is not clear or there is an issue, then you can upload your local version to ensure a clear video. Continue following the steps below to upload your local version.

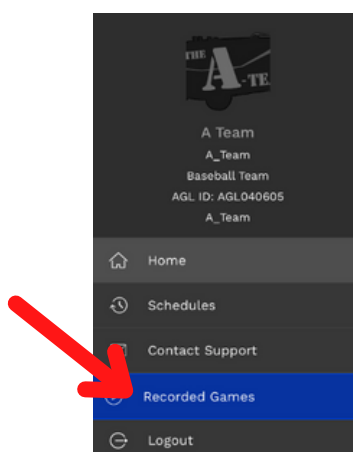


### STEP 3

Upload your local video to the AthletesGoLive cloud

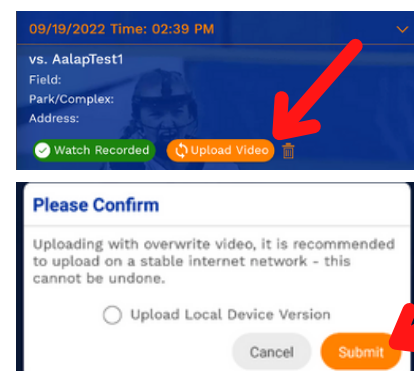
3A

Click the menu button in the top-left corner and select "Recorded Games"



3B

When you have a strong internet connection, click "Upload Video" and confirm the overwrite of the archived video



NOTE: The video should be uploaded and viewable in 2-3 minutes.

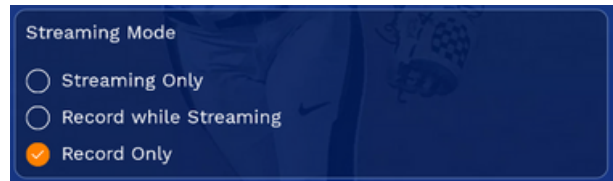
# OFFLINE RECORDING

BETA

## OPTION 3: RECORD ONLY

### STEP 1

Select "Record Only"



NOTE: Utilize the Record Only feature when you don't have reliable coverage.

### STEP 2

Record to your streaming device only and choose "End Game" when complete

- Upload the locally recorded video file when you have moved to a reliable connection area.
- Once you are done recording the game, you MUST upload the recording saved from your local device to the AthletesGoLive cloud.
- Generally, a 90-120 minute recording will take up roughly 2-3GB of storage.

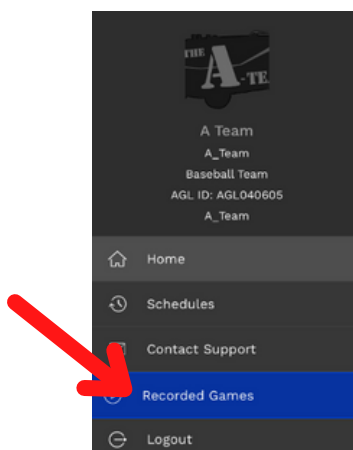


### STEP 3

Upload your local video to the AthletesGoLive cloud on your streaming device

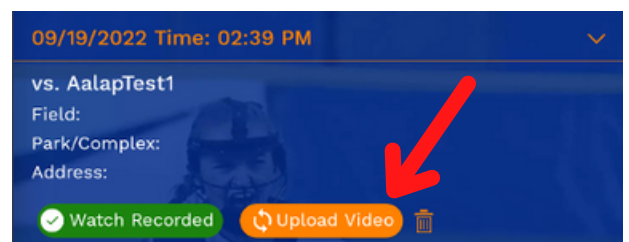
3A

Click the menu button in the top-left corner and select "Recorded Games"



3B

When you have a strong internet connection, click "Upload Video"



NOTE: The video should be uploaded and viewable in 2-3 minutes.